



# Title Plan - DP 494113

---

**Survey Number** DP 494113  
**Surveyor Reference** 1520-137966-01 Lakes Stage 3CD  
**Surveyor** Michael Peter Dewhirst  
**Survey Firm** Harrison Grierson Consultants Ltd  
**Surveyor Declaration** I Michael Peter Dewhirst, being a licensed cadastral surveyor, certify that:  
(a) this dataset provided by me and its related survey are accurate, correct and in accordance with the Cadastral Survey Act 2002 and the Rules for Cadastral Survey 2010, and  
(b) the survey was undertaken by me or under my personal direction.  
Declared on 11 Jul 2016 04:12 PM

---

## Survey Details

**Dataset Description** Lots 104-106, 148-235, 240-351, 905-908, 937-938, 940, 947-948, 969-972, 974 & 1002-1003 being a subdivision of Lot 1001 DP 486181, Lot 6 DP 348694 and Pt Lots 9 & 10 DP 364444

**Status** Deposited

**Land District** South Auckland **Survey Class** Class A

**Submitted Date** 11/07/2016 **Survey Approval Date** 12/07/2016

**Deposit Date** 05/07/2016

---

## Territorial Authorities

Tauranga City

---

## Comprised In

CT 692747  
CT 209384

---

## Created Parcels

Parcels	Parcel Intent	Area	CT Reference
Lot 104 Deposited Plan 494113	Fee Simple Title	0.0721 Ha	734249
Lot 105 Deposited Plan 494113	Fee Simple Title	0.0664 Ha	734250
Lot 106 Deposited Plan 494113	Fee Simple Title	0.0669 Ha	734251
Lot 148 Deposited Plan 494113	Fee Simple Title	0.0869 Ha	734252
Lot 149 Deposited Plan 494113	Fee Simple Title	0.0714 Ha	734253
Lot 150 Deposited Plan 494113	Fee Simple Title	0.0653 Ha	734254
Lot 151 Deposited Plan 494113	Fee Simple Title	0.0608 Ha	734255
Lot 152 Deposited Plan 494113	Fee Simple Title	0.0613 Ha	734256
Lot 153 Deposited Plan 494113	Fee Simple Title	0.0600 Ha	734257
Lot 154 Deposited Plan 494113	Fee Simple Title	0.0608 Ha	734258
Lot 155 Deposited Plan 494113	Fee Simple Title	0.0657 Ha	734259
Lot 156 Deposited Plan 494113	Fee Simple Title	0.0644 Ha	734260
Lot 157 Deposited Plan 494113	Fee Simple Title	0.0600 Ha	734261
Lot 158 Deposited Plan 494113	Fee Simple Title	0.0600 Ha	734262
Lot 159 Deposited Plan 494113	Fee Simple Title	0.0611 Ha	734263
Lot 160 Deposited Plan 494113	Fee Simple Title	0.0612 Ha	734264
Lot 161 Deposited Plan 494113	Fee Simple Title	0.0613 Ha	734265
Lot 162 Deposited Plan 494113	Fee Simple Title	0.0610 Ha	734266
Lot 163 Deposited Plan 494113	Fee Simple Title	0.0429 Ha	734267

# Title Plan - DP 494113

---

## Created Parcels

Parcels	Parcel Intent	Area	CT Reference
Lot 164 Deposited Plan 494113	Fee Simple Title	0.0499 Ha	734268
Lot 165 Deposited Plan 494113	Fee Simple Title	0.0649 Ha	734269
Lot 166 Deposited Plan 494113	Fee Simple Title	0.0481 Ha	734270
Lot 167 Deposited Plan 494113	Fee Simple Title	0.0468 Ha	734271
Lot 168 Deposited Plan 494113	Fee Simple Title	0.0649 Ha	734272
Lot 169 Deposited Plan 494113	Fee Simple Title	0.0602 Ha	734273
Lot 170 Deposited Plan 494113	Fee Simple Title	0.0546 Ha	734274
Lot 171 Deposited Plan 494113	Fee Simple Title	0.0544 Ha	734455
Lot 172 Deposited Plan 494113	Fee Simple Title	0.0548 Ha	734275
Lot 173 Deposited Plan 494113	Fee Simple Title	0.0587 Ha	734276
Lot 174 Deposited Plan 494113	Fee Simple Title	0.0596 Ha	734277
Lot 175 Deposited Plan 494113	Fee Simple Title	0.0418 Ha	734278
Lot 176 Deposited Plan 494113	Fee Simple Title	0.0526 Ha	734279
Lot 177 Deposited Plan 494113	Fee Simple Title	0.0582 Ha	734280
Lot 178 Deposited Plan 494113	Fee Simple Title	0.0576 Ha	734281
Lot 179 Deposited Plan 494113	Fee Simple Title	0.0610 Ha	734282
Lot 180 Deposited Plan 494113	Fee Simple Title	0.0711 Ha	734283
Lot 181 Deposited Plan 494113	Fee Simple Title	0.0629 Ha	734284
Lot 182 Deposited Plan 494113	Fee Simple Title	0.0587 Ha	734285
Lot 183 Deposited Plan 494113	Fee Simple Title	0.0571 Ha	734286
Lot 184 Deposited Plan 494113	Fee Simple Title	0.0573 Ha	734287
Lot 185 Deposited Plan 494113	Fee Simple Title	0.0592 Ha	734288
Lot 186 Deposited Plan 494113	Fee Simple Title	0.0531 Ha	734289
Lot 187 Deposited Plan 494113	Fee Simple Title	0.0484 Ha	734290
Lot 188 Deposited Plan 494113	Fee Simple Title	0.0514 Ha	734291
Lot 189 Deposited Plan 494113	Fee Simple Title	0.0514 Ha	734292
Lot 190 Deposited Plan 494113	Fee Simple Title	0.0514 Ha	734293
Lot 191 Deposited Plan 494113	Fee Simple Title	0.0514 Ha	734294
Lot 192 Deposited Plan 494113	Fee Simple Title	0.0514 Ha	734295
Lot 193 Deposited Plan 494113	Fee Simple Title	0.0515 Ha	734296
Lot 194 Deposited Plan 494113	Fee Simple Title	0.0450 Ha	734297
Lot 195 Deposited Plan 494113	Fee Simple Title	0.0450 Ha	734298
Lot 196 Deposited Plan 494113	Fee Simple Title	0.0499 Ha	734299
Lot 197 Deposited Plan 494113	Fee Simple Title	0.0621 Ha	734300
Lot 198 Deposited Plan 494113	Fee Simple Title	0.0540 Ha	734301
Lot 199 Deposited Plan 494113	Fee Simple Title	0.0540 Ha	734302
Lot 200 Deposited Plan 494113	Fee Simple Title	0.0543 Ha	734303
Lot 201 Deposited Plan 494113	Fee Simple Title	0.0556 Ha	734304
Lot 202 Deposited Plan 494113	Fee Simple Title	0.0555 Ha	734305
Lot 203 Deposited Plan 494113	Fee Simple Title	0.0587 Ha	734306
Lot 204 Deposited Plan 494113	Fee Simple Title	0.0488 Ha	734307
Lot 205 Deposited Plan 494113	Fee Simple Title	0.0470 Ha	734308
Lot 206 Deposited Plan 494113	Fee Simple Title	0.0488 Ha	734309
Lot 207 Deposited Plan 494113	Fee Simple Title	0.0488 Ha	734310

# Title Plan - DP 494113

---

## Created Parcels

Parcels	Parcel Intent	Area	CT Reference
Lot 208 Deposited Plan 494113	Fee Simple Title	0.0510 Ha	734311
Lot 209 Deposited Plan 494113	Fee Simple Title	0.0640 Ha	734312
Lot 210 Deposited Plan 494113	Fee Simple Title	0.0590 Ha	734313
Lot 211 Deposited Plan 494113	Fee Simple Title	0.0544 Ha	734314
Lot 212 Deposited Plan 494113	Fee Simple Title	0.0537 Ha	734315
Lot 213 Deposited Plan 494113	Fee Simple Title	0.0513 Ha	734316
Lot 214 Deposited Plan 494113	Fee Simple Title	0.0506 Ha	734317
Lot 215 Deposited Plan 494113	Fee Simple Title	0.0540 Ha	734318
Lot 216 Deposited Plan 494113	Fee Simple Title	0.0443 Ha	734319
Lot 217 Deposited Plan 494113	Fee Simple Title	0.0444 Ha	734320
Lot 218 Deposited Plan 494113	Fee Simple Title	0.0632 Ha	734321
Lot 219 Deposited Plan 494113	Fee Simple Title	0.0455 Ha	734322
Lot 220 Deposited Plan 494113	Fee Simple Title	0.0421 Ha	734323
Lot 221 Deposited Plan 494113	Fee Simple Title	0.0526 Ha	734324
Lot 222 Deposited Plan 494113	Fee Simple Title	0.0501 Ha	734325
Lot 223 Deposited Plan 494113	Fee Simple Title	0.0518 Ha	734326
Lot 224 Deposited Plan 494113	Fee Simple Title	0.0720 Ha	734327
Lot 225 Deposited Plan 494113	Fee Simple Title	0.0459 Ha	734328
Lot 226 Deposited Plan 494113	Fee Simple Title	0.0453 Ha	734329
Lot 227 Deposited Plan 494113	Fee Simple Title	0.0708 Ha	734330
Lot 228 Deposited Plan 494113	Fee Simple Title	0.0756 Ha	734331
Lot 229 Deposited Plan 494113	Fee Simple Title	0.3525 Ha	734332
Lot 230 Deposited Plan 494113	Fee Simple Title	0.0543 Ha	734333
Lot 231 Deposited Plan 494113	Fee Simple Title	0.0463 Ha	734334
Lot 232 Deposited Plan 494113	Fee Simple Title	0.0619 Ha	734335
Lot 233 Deposited Plan 494113	Fee Simple Title	0.0653 Ha	734336
Lot 234 Deposited Plan 494113	Fee Simple Title	0.0700 Ha	734337
Lot 235 Deposited Plan 494113	Fee Simple Title	0.0653 Ha	734338
Lot 240 Deposited Plan 494113	Fee Simple Title	0.0578 Ha	734343
Lot 241 Deposited Plan 494113	Fee Simple Title	0.0551 Ha	734344
Lot 242 Deposited Plan 494113	Fee Simple Title	0.0544 Ha	734345
Lot 243 Deposited Plan 494113	Fee Simple Title	0.0542 Ha	734346
Lot 244 Deposited Plan 494113	Fee Simple Title	0.0580 Ha	734347
Lot 245 Deposited Plan 494113	Fee Simple Title	0.0585 Ha	734348
Lot 246 Deposited Plan 494113	Fee Simple Title	0.0546 Ha	734349
Lot 247 Deposited Plan 494113	Fee Simple Title	0.0515 Ha	734350
Lot 248 Deposited Plan 494113	Fee Simple Title	0.0520 Ha	734351
Lot 249 Deposited Plan 494113	Fee Simple Title	0.0543 Ha	734352
Lot 250 Deposited Plan 494113	Fee Simple Title	0.0535 Ha	734353
Lot 251 Deposited Plan 494113	Fee Simple Title	0.0552 Ha	734354
Lot 252 Deposited Plan 494113	Fee Simple Title	0.0541 Ha	734355
Lot 253 Deposited Plan 494113	Fee Simple Title	0.0834 Ha	734356
Lot 254 Deposited Plan 494113	Fee Simple Title	0.0615 Ha	734357
Lot 255 Deposited Plan 494113	Fee Simple Title	0.0473 Ha	734358

# Title Plan - DP 494113

---

## Created Parcels

Parcels	Parcel Intent	Area	CT Reference
Lot 256 Deposited Plan 494113	Fee Simple Title	0.0436 Ha	734359
Lot 257 Deposited Plan 494113	Fee Simple Title	0.0526 Ha	734360
Lot 258 Deposited Plan 494113	Fee Simple Title	0.0444 Ha	734361
Lot 259 Deposited Plan 494113	Fee Simple Title	0.0507 Ha	734362
Lot 260 Deposited Plan 494113	Fee Simple Title	0.0547 Ha	734363
Lot 261 Deposited Plan 494113	Fee Simple Title	0.0593 Ha	734364
Lot 262 Deposited Plan 494113	Fee Simple Title	0.0461 Ha	734365
Lot 263 Deposited Plan 494113	Fee Simple Title	0.0526 Ha	734366
Lot 264 Deposited Plan 494113	Fee Simple Title	0.0450 Ha	734367
Lot 265 Deposited Plan 494113	Fee Simple Title	0.0445 Ha	734368
Lot 266 Deposited Plan 494113	Fee Simple Title	0.0520 Ha	734369
Lot 267 Deposited Plan 494113	Fee Simple Title	0.0402 Ha	734370
Lot 268 Deposited Plan 494113	Fee Simple Title	0.0417 Ha	734371
Lot 269 Deposited Plan 494113	Fee Simple Title	0.0449 Ha	734372
Lot 270 Deposited Plan 494113	Fee Simple Title	0.0462 Ha	734373
Lot 271 Deposited Plan 494113	Fee Simple Title	0.0451 Ha	734374
Lot 272 Deposited Plan 494113	Fee Simple Title	0.0514 Ha	734375
Lot 273 Deposited Plan 494113	Fee Simple Title	0.0514 Ha	734376
Lot 274 Deposited Plan 494113	Fee Simple Title	0.0515 Ha	734377
Lot 275 Deposited Plan 494113	Fee Simple Title	0.0450 Ha	734378
Lot 276 Deposited Plan 494113	Fee Simple Title	0.0413 Ha	734379
Lot 277 Deposited Plan 494113	Fee Simple Title	0.0461 Ha	734380
Lot 278 Deposited Plan 494113	Fee Simple Title	0.0453 Ha	734381
Lot 279 Deposited Plan 494113	Fee Simple Title	0.0458 Ha	734382
Lot 280 Deposited Plan 494113	Fee Simple Title	0.0462 Ha	734383
Lot 281 Deposited Plan 494113	Fee Simple Title	0.0464 Ha	734384
Lot 282 Deposited Plan 494113	Fee Simple Title	0.0466 Ha	734385
Lot 283 Deposited Plan 494113	Fee Simple Title	0.0466 Ha	734386
Lot 284 Deposited Plan 494113	Fee Simple Title	0.0659 Ha	734387
Lot 285 Deposited Plan 494113	Fee Simple Title	0.0674 Ha	734388
Lot 286 Deposited Plan 494113	Fee Simple Title	0.0675 Ha	734389
Lot 287 Deposited Plan 494113	Fee Simple Title	0.0679 Ha	734390
Lot 288 Deposited Plan 494113	Fee Simple Title	0.0683 Ha	734391
Lot 289 Deposited Plan 494113	Fee Simple Title	0.0685 Ha	734392
Lot 290 Deposited Plan 494113	Fee Simple Title	0.0682 Ha	734393
Lot 291 Deposited Plan 494113	Fee Simple Title	0.0676 Ha	734394
Lot 292 Deposited Plan 494113	Fee Simple Title	0.0675 Ha	734395
Lot 293 Deposited Plan 494113	Fee Simple Title	0.0663 Ha	734396
Lot 294 Deposited Plan 494113	Fee Simple Title	0.0540 Ha	734397
Lot 295 Deposited Plan 494113	Fee Simple Title	0.0490 Ha	734398
Lot 296 Deposited Plan 494113	Fee Simple Title	0.0479 Ha	734399
Lot 297 Deposited Plan 494113	Fee Simple Title	0.0496 Ha	734400
Lot 298 Deposited Plan 494113	Fee Simple Title	0.0542 Ha	734401
Lot 299 Deposited Plan 494113	Fee Simple Title	0.0531 Ha	734402

# Title Plan - DP 494113

---

## Created Parcels

Parcels	Parcel Intent	Area	CT Reference
Lot 300 Deposited Plan 494113	Fee Simple Title	0.0507 Ha	734403
Lot 301 Deposited Plan 494113	Fee Simple Title	0.0511 Ha	734404
Lot 302 Deposited Plan 494113	Fee Simple Title	0.0538 Ha	734405
Lot 303 Deposited Plan 494113	Fee Simple Title	0.0537 Ha	734406
Lot 304 Deposited Plan 494113	Fee Simple Title	0.0561 Ha	734407
Lot 305 Deposited Plan 494113	Fee Simple Title	0.0536 Ha	734408
Lot 306 Deposited Plan 494113	Fee Simple Title	0.0532 Ha	734409
Lot 307 Deposited Plan 494113	Fee Simple Title	0.0513 Ha	734410
Lot 308 Deposited Plan 494113	Fee Simple Title	0.0513 Ha	734411
Lot 309 Deposited Plan 494113	Fee Simple Title	0.0513 Ha	734412
Lot 310 Deposited Plan 494113	Fee Simple Title	0.0485 Ha	734413
Lot 311 Deposited Plan 494113	Fee Simple Title	0.0485 Ha	734414
Lot 312 Deposited Plan 494113	Fee Simple Title	0.0527 Ha	734415
Lot 313 Deposited Plan 494113	Fee Simple Title	0.0616 Ha	734416
Lot 314 Deposited Plan 494113	Fee Simple Title	0.0542 Ha	734417
Lot 315 Deposited Plan 494113	Fee Simple Title	0.0542 Ha	734418
Lot 316 Deposited Plan 494113	Fee Simple Title	0.0542 Ha	734419
Lot 317 Deposited Plan 494113	Fee Simple Title	0.0525 Ha	734420
Lot 318 Deposited Plan 494113	Fee Simple Title	0.0568 Ha	734421
Lot 319 Deposited Plan 494113	Fee Simple Title	0.0566 Ha	734422
Lot 320 Deposited Plan 494113	Fee Simple Title	0.0573 Ha	734423
Lot 321 Deposited Plan 494113	Fee Simple Title	0.0587 Ha	734424
Lot 322 Deposited Plan 494113	Fee Simple Title	0.0583 Ha	734425
Lot 323 Deposited Plan 494113	Fee Simple Title	0.0566 Ha	734426
Lot 324 Deposited Plan 494113	Fee Simple Title	0.0562 Ha	734427
Lot 325 Deposited Plan 494113	Fee Simple Title	0.0553 Ha	734428
Lot 326 Deposited Plan 494113	Fee Simple Title	0.0580 Ha	734429
Lot 327 Deposited Plan 494113	Fee Simple Title	0.0480 Ha	734430
Lot 328 Deposited Plan 494113	Fee Simple Title	0.0411 Ha	734431
Lot 329 Deposited Plan 494113	Fee Simple Title	0.0481 Ha	734432
Lot 330 Deposited Plan 494113	Fee Simple Title	0.0451 Ha	734433
Lot 331 Deposited Plan 494113	Fee Simple Title	0.0460 Ha	734434
Lot 332 Deposited Plan 494113	Fee Simple Title	0.0426 Ha	734435
Lot 333 Deposited Plan 494113	Fee Simple Title	0.0386 Ha	734436
Lot 334 Deposited Plan 494113	Fee Simple Title	0.0382 Ha	734437
Lot 335 Deposited Plan 494113	Fee Simple Title	0.0444 Ha	734438
Lot 336 Deposited Plan 494113	Fee Simple Title	0.0439 Ha	734439
Lot 337 Deposited Plan 494113	Fee Simple Title	0.0556 Ha	734440
Lot 338 Deposited Plan 494113	Fee Simple Title	0.0495 Ha	734441
Lot 339 Deposited Plan 494113	Fee Simple Title	0.0569 Ha	734442
Lot 340 Deposited Plan 494113	Fee Simple Title	0.0461 Ha	734443
Lot 341 Deposited Plan 494113	Fee Simple Title	0.0516 Ha	734444
Lot 342 Deposited Plan 494113	Fee Simple Title	0.0596 Ha	734445
Lot 343 Deposited Plan 494113	Fee Simple Title	0.0561 Ha	734446

# Title Plan - DP 494113

---

## Created Parcels

Parcels	Parcel Intent	Area	CT Reference
Lot 344 Deposited Plan 494113	Fee Simple Title	0.0559 Ha	734447
Lot 345 Deposited Plan 494113	Fee Simple Title	0.0595 Ha	734448
Lot 346 Deposited Plan 494113	Fee Simple Title	0.0839 Ha	734449
Lot 347 Deposited Plan 494113	Fee Simple Title	0.0944 Ha	734450
Lot 348 Deposited Plan 494113	Fee Simple Title	0.1020 Ha	734451
Lot 349 Deposited Plan 494113	Fee Simple Title	0.1108 Ha	734452
Lot 350 Deposited Plan 494113	Fee Simple Title	0.0541 Ha	734453
Lot 351 Deposited Plan 494113	Fee Simple Title	0.0980 Ha	734454
	Road	2.2143 Ha	
	Road	0.4305 Ha	
	Road	1.6110 Ha	
	Road	0.2324 Ha	
Lot 937 Deposited Plan 494113	Vesting on Deposit for Local Purpose Reserve	0.0350 Ha	734459
Lot 938 Deposited Plan 494113	Vesting on Deposit for Recreation Reserve (Territorial Authority)	0.2658 Ha	734460
Lot 940 Deposited Plan 494113	Vesting on Deposit for Recreation Reserve (Territorial Authority)	0.2918 Ha	734461
Lot 947 Deposited Plan 494113	Vesting on Deposit for Local Purpose Reserve	0.8018 Ha	734462
Lot 948 Deposited Plan 494113	Vesting on Deposit for Local Purpose Reserve	3.9361 Ha	734463
Lot 969 Deposited Plan 494113	Fee Simple Title	0.0110 Ha	Multiple
Lot 970 Deposited Plan 494113	Fee Simple Title	0.0112 Ha	Multiple
Lot 971 Deposited Plan 494113	Fee Simple Title	0.0116 Ha	Multiple
Area E Deposited Plan 494113	Easement		
Lot 972 Deposited Plan 494113	Fee Simple Title	0.0503 Ha	Multiple
Lot 974 Deposited Plan 494113	Fee Simple Title	0.0313 Ha	Multiple
Lot 1002 Deposited Plan 494113	Fee Simple Title	30.6372 Ha	734464
Lot 1003 Deposited Plan 494113	Fee Simple Title	21.7494 Ha	734465
Area A Deposited Plan 494113	Easement		
Area B Deposited Plan 494113	Easement		
Area C Deposited Plan 494113	Easement		
Area D Deposited Plan 494113	Easement		
Area F Deposited Plan 494113	Easement		
Area G Deposited Plan 494113	Easement		
Area H Deposited Plan 494113	Easement		
Area I Deposited Plan 494113	Easement		
Area J Deposited Plan 494113	Easement		
Area K Deposited Plan 494113	Easement		
Area L Deposited Plan 494113	Easement		
Area M Deposited Plan 494113	Easement		

# Title Plan - DP 494113

---

## Created Parcels

Parcels	Parcel Intent	Area	CT Reference
Area N Deposited Plan 494113	Easement		
Area O Deposited Plan 494113	Easement		
Area P Deposited Plan 494113	Easement		
Area Q Deposited Plan 494113	Easement		
Area R Deposited Plan 494113	Easement		
Area S Deposited Plan 494113	Easement		
Area T Deposited Plan 494113	Easement		
Area U Deposited Plan 494113	Easement		
Area V Deposited Plan 494113	Easement		
Area W Deposited Plan 494113	Easement		
Area X Deposited Plan 494113	Easement		
Area Y Deposited Plan 494113	Easement		
Area Z Deposited Plan 494113	Easement		
Area AA Deposited Plan 494113	Easement		
Area AB Deposited Plan 494113	Easement		
Area AC Deposited Plan 494113	Easement		
Area AD Deposited Plan 494113	Easement		
Area AG Deposited Plan 494113	Easement		
Area AH Deposited Plan 494113	Easement		
Area AI Deposited Plan 494113	Easement		
Area AJ Deposited Plan 494113	Easement		
Area AK Deposited Plan 494113	Easement		
Area AL Deposited Plan 494113	Easement		
Area AM Deposited Plan 494113	Easement		
Area AN Deposited Plan 494113	Easement		
Area AO Deposited Plan 494113	Easement		
Area AP Deposited Plan 494113	Easement		
Area AQ Deposited Plan 494113	Easement		
Area AR Deposited Plan 494113	Easement		
Area AS Deposited Plan 494113	Easement		
Area AT Deposited Plan 494113	Easement		
Area RC Deposited Plan 494113	Easement		
Area RD Deposited Plan 494113	Easement		
Area RE Deposited Plan 494113	Easement		
Area RF Deposited Plan 494113	Easement		
Area RG Deposited Plan 494113	Easement		
Area RH Deposited Plan 494113	Easement		
Area RI Deposited Plan 494113	Easement		
Area RJ Deposited Plan 494113	Easement		
Area RK Deposited Plan 494113	Easement		
Area RL Deposited Plan 494113	Easement		
Area RM Deposited Plan 494113	Easement		
Area RN Deposited Plan 494113	Easement		
Area RO Deposited Plan 494113	Easement		



# Title Plan - DP 494113

---

## Created Parcels

Parcels	Parcel Intent	Area	CT Reference
Area RP Deposited Plan 494113	Easement		
Area RQ Deposited Plan 494113	Easement		
<b>Total Area</b>		<hr/> 73.9311 Ha	



**Land Registration District**

South Auckland

**Plan Number**

DP 494113

TCC Ref: RC21332-11 & RC24045-02  
Harrison Grierson Ref: 1520-137966-01

<b>Memorandum of Easements</b> (Pursuant to s243 Resource Management Act 1991)			
<b>Purpose</b>	<b>Shown</b>	<b>Servient Tenement</b>	<b>Dominant Tenement</b>
Right of Way	A	Lot 969 hereon	Lots 164-165 hereon
Right to drain Water & Sewage	B	Lot 970 hereon	Lots 256-257 hereon
Right to convey Electricity, Gas & Water	C	Lot 971 hereon	Lots 260-261 hereon
Right to convey Telecommunications and Computer Media	D	Lot 972 hereon	Lots 220-225 hereon
	F	Lot 974 hereon	Lots 215-217 hereon

<b>Memorandum of Easements in Gross</b> (Pursuant to s243 Resource Management Act 1991)			
<b>Purpose</b>	<b>Shown</b>	<b>Servient Tenement</b>	<b>Grantee</b>
Right to drain Water & Sewage	A	Lot 969 hereon	Tauranga City Council
	B	Lot 970 hereon	
	C	Lot 971 hereon	
	D	Lot 972 hereon	
	E	Lot 1002 hereon	
	F	Lot 974 hereon	
	G	Lot 106 hereon	
	H	Lot 105 hereon	
	I	Lot 148 hereon	
	J	Lot 149 hereon	
	K	Lot 150 hereon	

<b>Memorandum of Easements in Gross (cont)</b> (Pursuant to s243 Resource Management Act 1991)			
<b>Purpose</b>	<b>Shown</b>	<b>Servient Tenement</b>	<b>Grantee</b>
Right to drain Water & Sewage	L	Lot 151 hereon	Tauranga City Council
	M	Lot 152 hereon	
	N	Lot 153 hereon	
	O	Lot 154 hereon	
	P	Lot 155 hereon	
	Q	Lot 156 hereon	
	R	Lot 157 hereon	
	S	Lot 158 hereon	
	T	Lot 159 hereon	
	U	Lot 160 hereon	
	V	Lot 161 hereon	
	W	Lot 162 hereon	
	X	Lot 253 hereon	
	AA	Lot 243 hereon	
	AB	Lot 242 hereon	
	AC	Lot 241 hereon	
	AD	Lot 240 hereon	
	AG	Lot 173 hereon	
	AH	Lot 172 hereon	
	AI	Lot 181 hereon	
AJ	Lot 182 hereon		
AK	Lot 183 hereon		

<b>Memorandum of Easements in Gross (cont)</b> (Pursuant to s243 Resource Management Act 1991)			
<b>Purpose</b>	<b>Shown</b>	<b>Servient Tenement</b>	<b>Grantee</b>
Right to drain Water & Sewage	AL	Lot 184 hereon	Tauranga City Council
	AM	Lot 185 hereon	
	AN	Lot 186 hereon	
	AO	Lot 187 hereon	
	AP	Lot 938 hereon	
	AQ	Lot 215 hereon	
AR	Lot 224 hereon		
Right to drain Water	Y	Lot 252 hereon	
	Z	Lot 251 hereon	

<b>Schedule of Proposed Easements in Gross</b>			
<b>Purpose</b>	<b>Shown</b>	<b>Servient Tenement</b>	<b>Grantee</b>
Right to convey Electricity	D	Lot 972 hereon	Powerco Ltd
Right to convey Telecommunications and Computer Media	A	Lot 969 hereon	Waikato Networks Ltd
	B	Lot 970 hereon	
	C	Lot 971 hereon	
	D	Lot 972 hereon	
	E	Lot 1002 hereon	
	F	Lot 974 hereon	

<b>Schedule of Proposed Easements in Gross (cont)</b>			
Right to convey Gas	A	Lot 969 hereon	First Gas Ltd
	B	Lot 970 hereon	
	C	Lot 971 hereon	
	D	Lot 972 hereon	
	E	Lot 1002 hereon	
	F	Lot 974 hereon	

<b>Schedule of Existing Easements in Gross</b>			
<b>Purpose</b>	<b>Shown</b>	<b>Servient Tenement</b>	<b>Grantee / Document Number</b>
Right to drain and store Water	AS	Lot 1003 hereon	Tauranga City Council EI 8517118.1

<b>Schedule of Existing Easements</b>			
<b>Purpose</b>	<b>Shown</b>	<b>Servient Tenement</b>	<b>Document Number</b>
Right to convey Water	AT	Lot 1003 hereon	TE S135796

<b>Schedule of Existing Easements to be Cancelled</b> (Pursuant to s243 Resource Management Act 1991)			
<b>Purpose</b>	<b>Shown</b>	<b>Servient Tenement</b>	<b>Document Number</b>
Right of Way	U DP 486181	Lot 1001 DP 486181	EI 6592047.7



<b>Schedule of Existing Easements to be Cancelled</b>			
<b>Purpose</b>	<b>Shown</b>	<b>Servient Tenement</b>	<b>Document Number</b>
Right to convey Electricity, Water & Gas Right to convey Telecommunications and Computer Media	U DP 486181	Lot 1001 DP 486181	EI 6592047.7

Areas RC - RQ are subject to a Consent Notice.

### **Amalgamation Conditions**

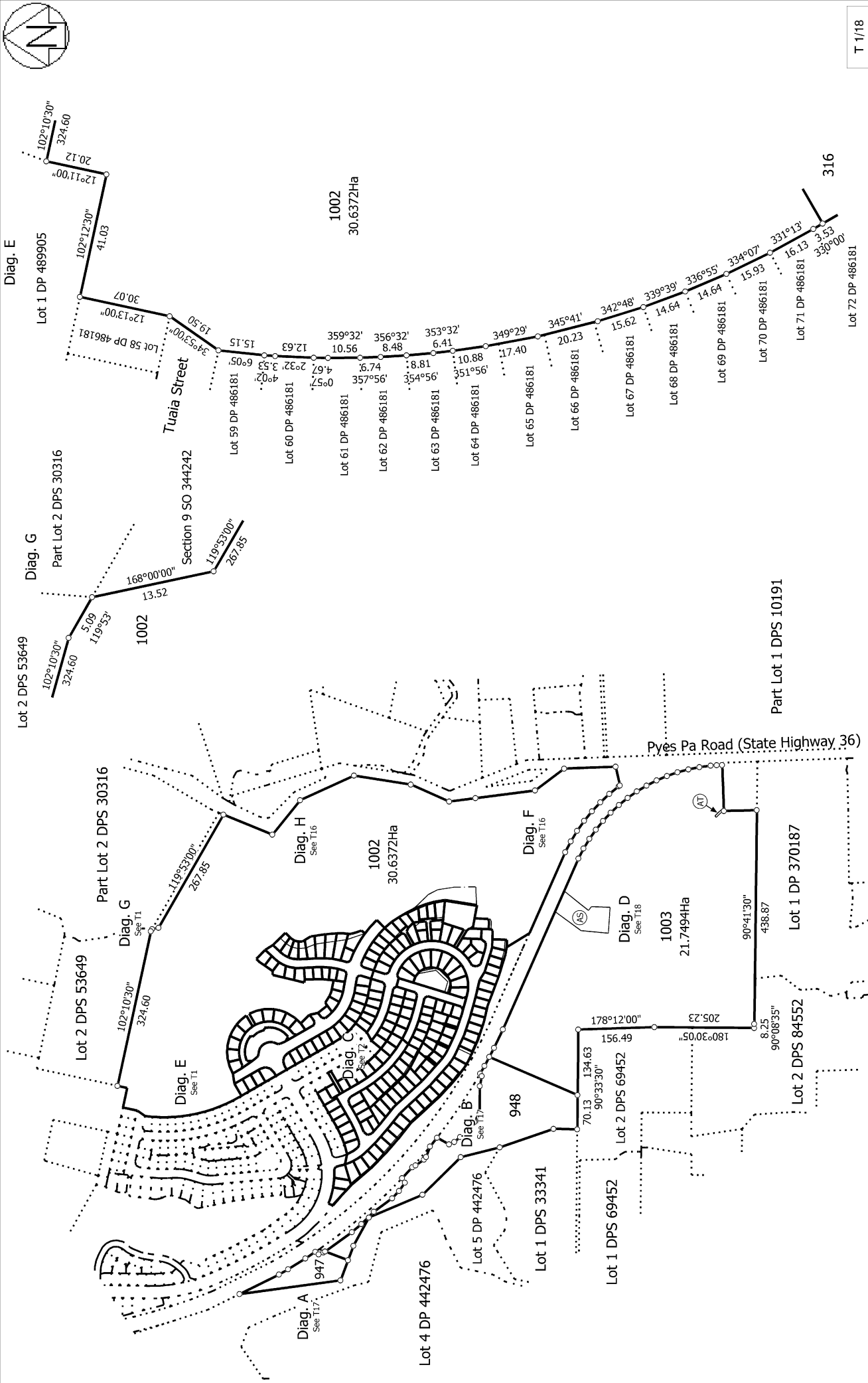
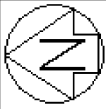
That Lot 969 hereon be held as 2 undivided one half shares by the owners of Lots 164-165 hereon as Tenants in Common in the said shares and that individual computer registers be issued in accordance therewith. See request 1322193.

That Lot 970 hereon be held as 2 undivided one half shares by the owners of Lots 256-257 hereon as Tenants in Common in the said shares and that individual computer registers be issued in accordance therewith. See request 1322193.

That Lot 971 hereon be held as 2 undivided one half shares by the owners of Lots 260-261 hereon as Tenants in Common in the said shares and that individual computer registers be issued in accordance therewith. See request 1322193.

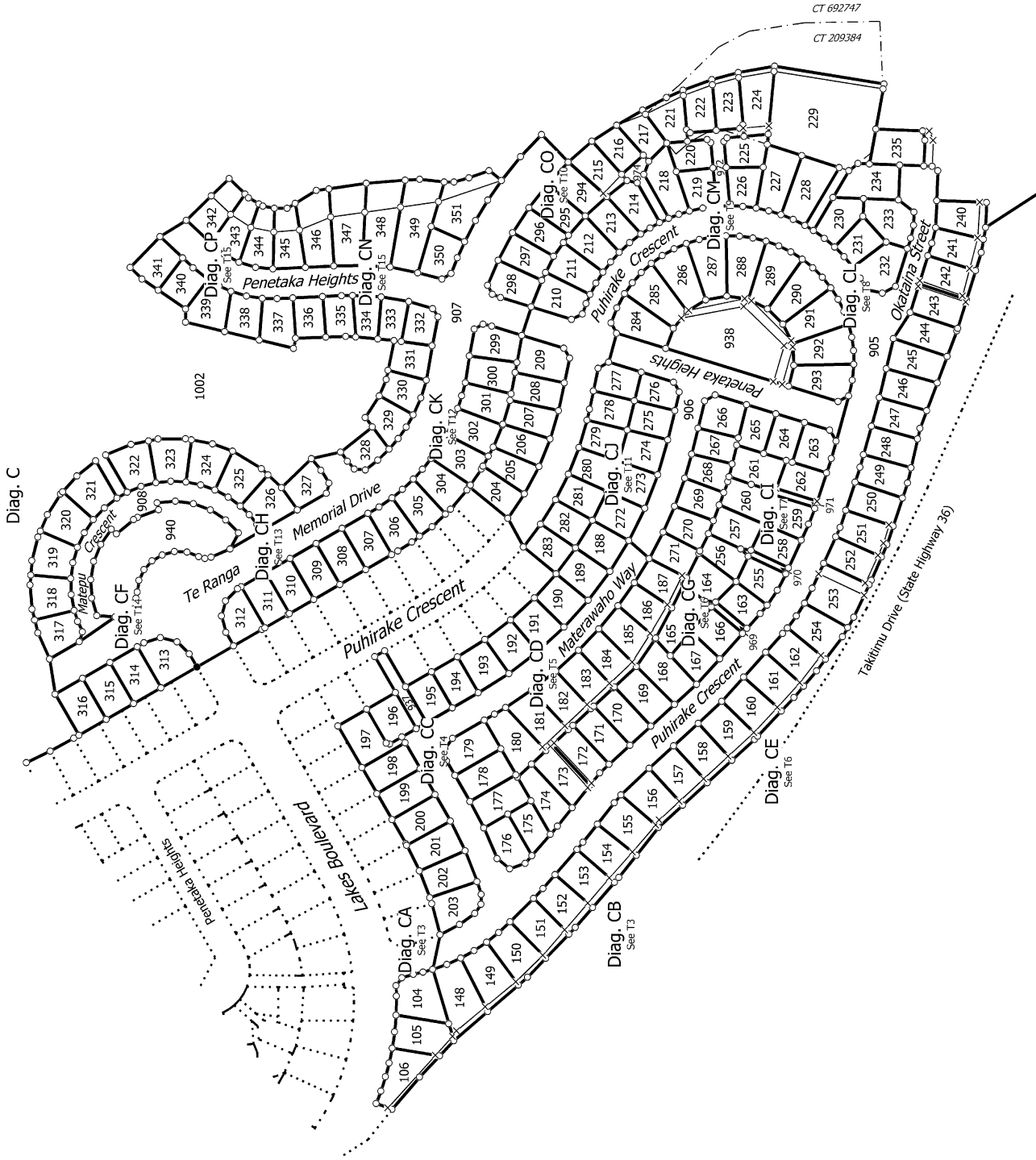
That Lot 972 hereon be held as 6 undivided one sixth shares by the owners of Lots 220-225 hereon as Tenants in Common in the said shares and that individual computer registers be issued in accordance therewith. See request 1322193.

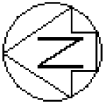
That Lot 974 hereon be held as 3 undivided one third shares by the owners of Lots 215-217 hereon as Tenants in Common in the said shares and that individual computer registers be issued in accordance therewith. See request 1322193.



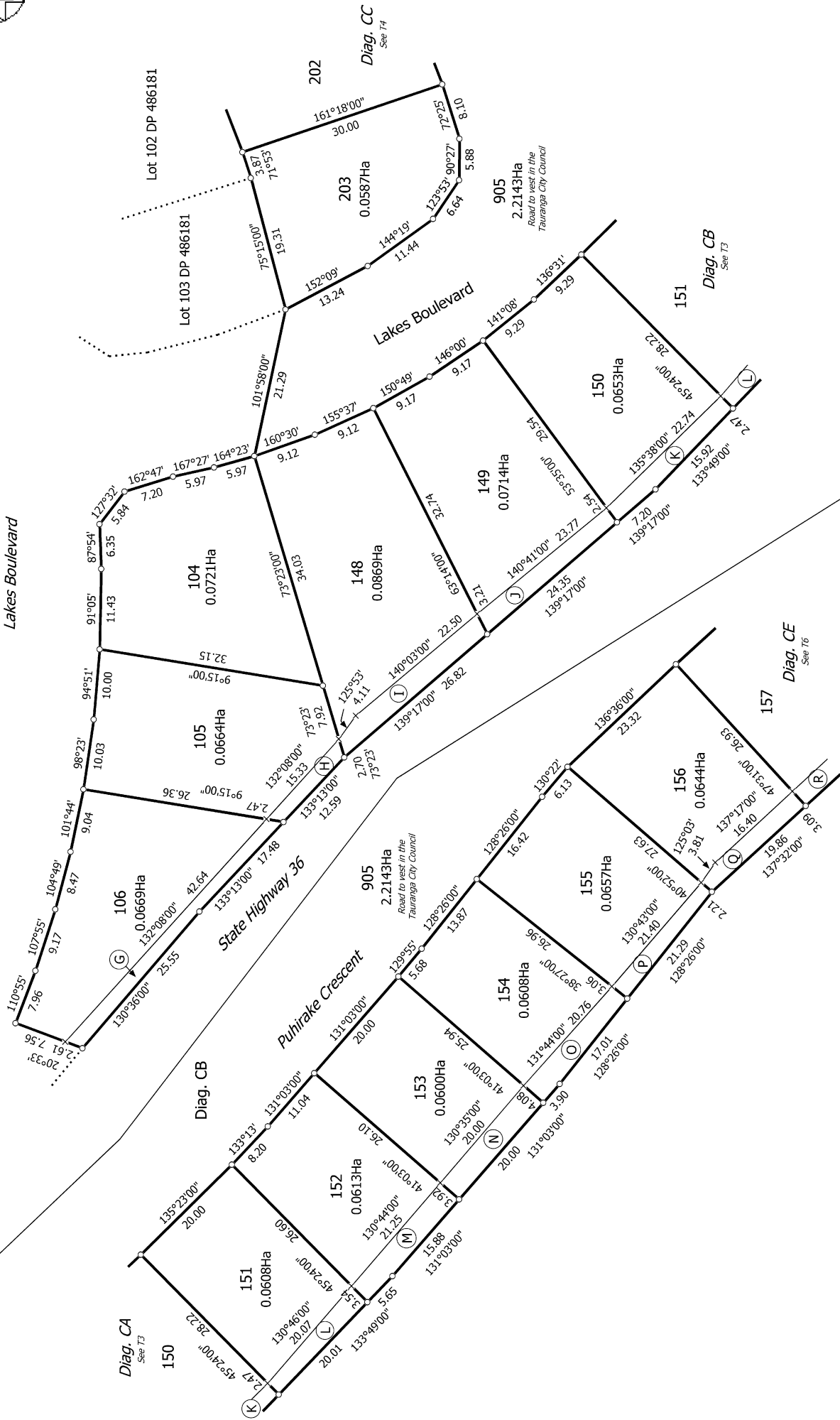
T 1/18

<p>Land District: South Auckland</p> <p><b>Digitally Generated Plan</b></p> <p>Generated on: 22/07/2016 11:16pm Page 14 of 31</p>	<p>Lots 104-106, 148-235, 240-351, 905-908, 937-938, 940, 947-948, 969-972, 974 &amp; 1002-1003 being a subdivision of Lot 1001 DP 486181, Lot 6 DP 348694 and Pt 1 of Lots 9 &amp; 10 DP 364444</p>	<p>Surveyor: Michael Peter Dewhurst</p> <p>Firm: Harrison Grierson Consultants Ltd</p>	<p><b>Title Plan</b></p> <p>DP 494113</p> <p>Deposited on: 5/07/2016</p>
---	--	--	--





Diag. CA  
Lakes Boulevard



Lot 102 DP 486181

Lot 103 DP 486181

202  
Diag. CC  
See T4

203  
0.0587Ha

905  
2.2143Ha  
Road to west in the  
Tauranga City Council

151  
Diag. CB  
See T3

150  
0.0653Ha

149  
0.0714Ha

148  
0.0869Ha

157  
Diag. CE  
See T6

156  
0.0644Ha

905  
2.2143Ha  
Road to west in the  
Tauranga City Council

155  
0.0657Ha

154  
0.0608Ha

153  
0.0600Ha

152  
0.0613Ha

151  
0.0608Ha

150  
0.0653Ha

Diag. CA  
See T3

T 3/18

Land District: South Auckland

Digitally Generated Plan

Generated on: 22/07/2016 11:16pm Page 16 of 31

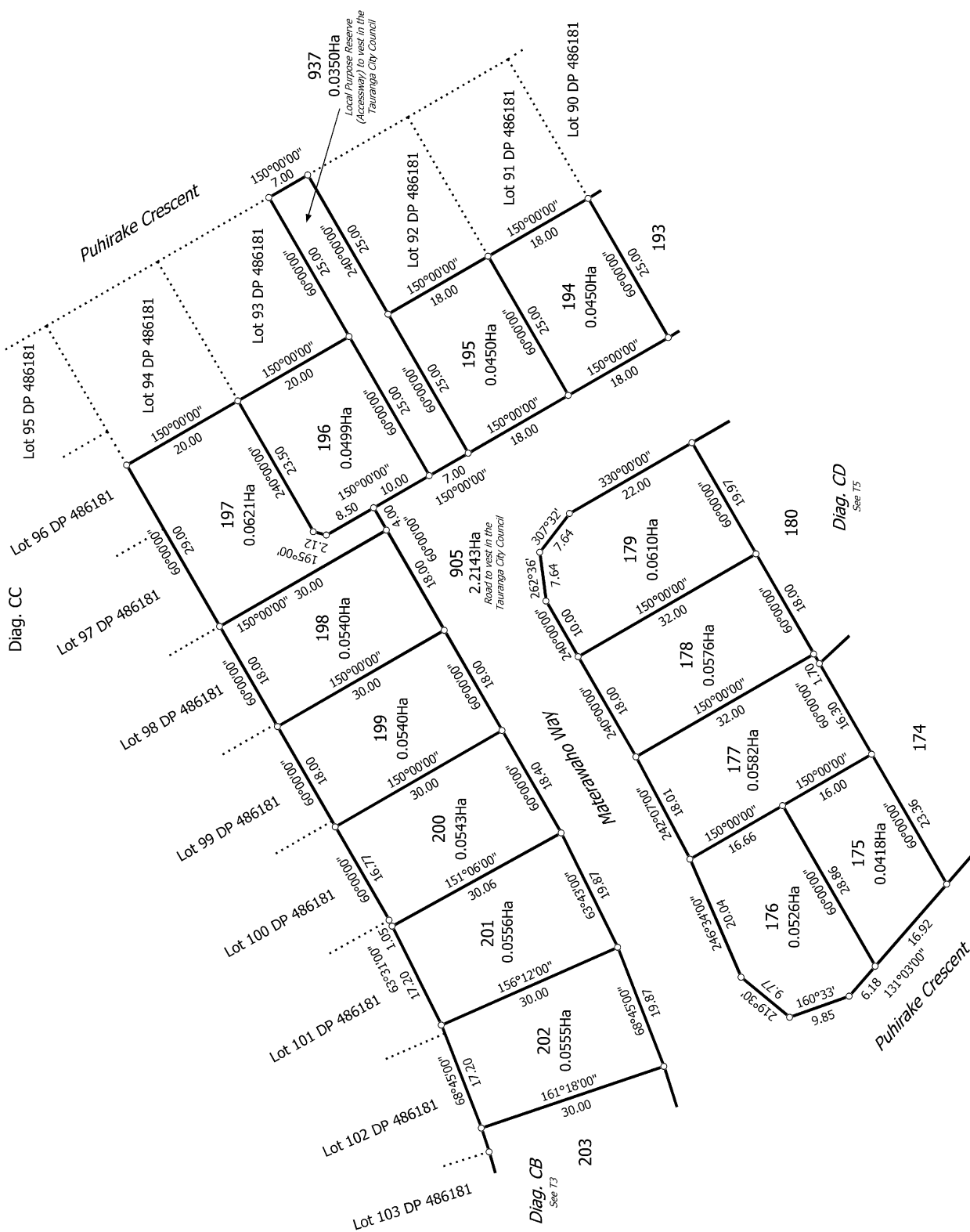
Lots 104-106, 148-235, 240-351, 905-908, 937-938, 940, 947-948, 969-972, 974  
& 1002-1003 being a subdivision of Lot 1001 DP 486181, Lot 6 DP 348694 and  
Pt 1 of 9 & 10 DP 364444

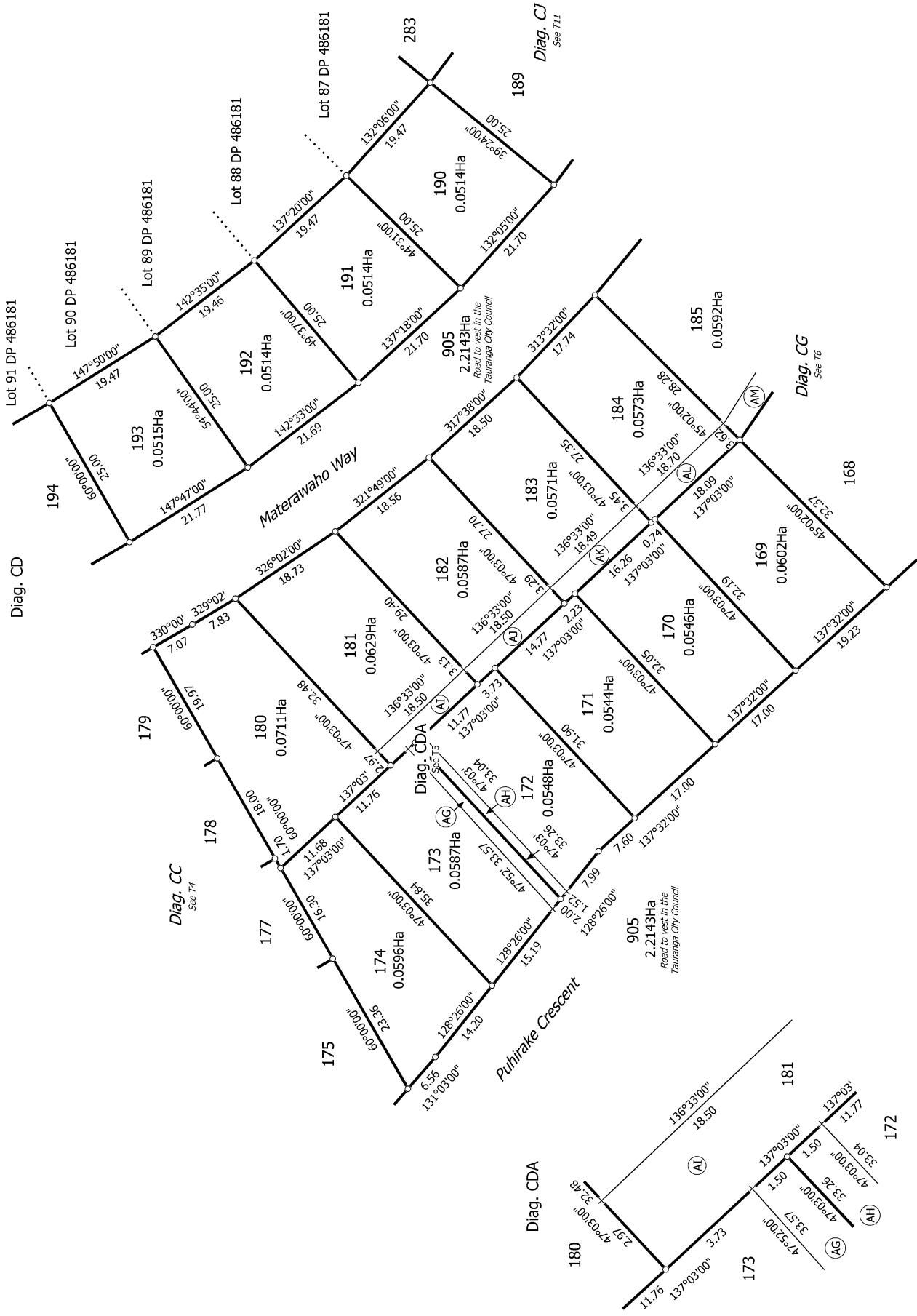
Surveyor: Michael Peter Dewhurst  
Firm: Harrison Grierson Consultants Ltd

Title Plan  
DP 494113

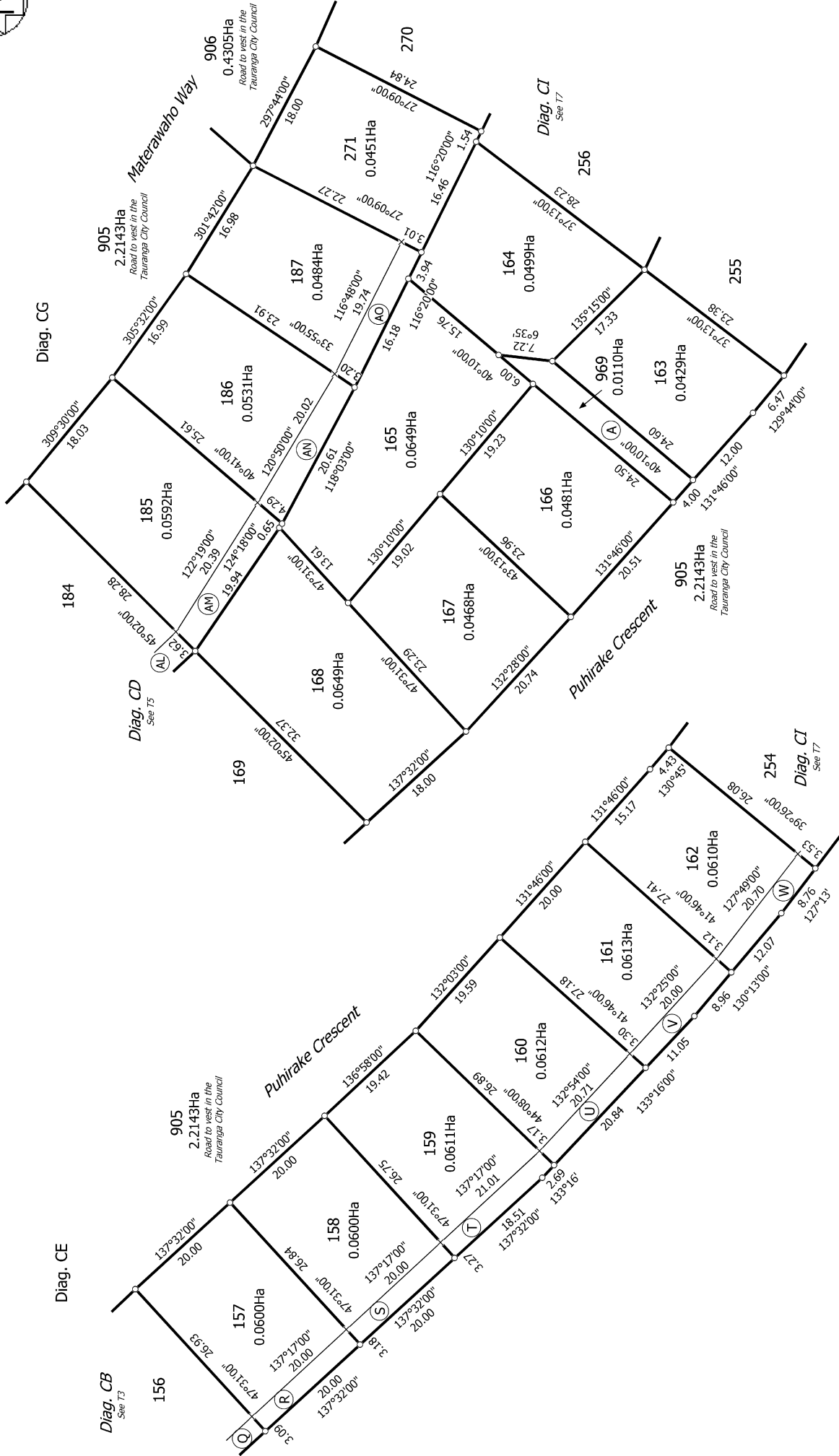
Deposited on: 5/07/2016





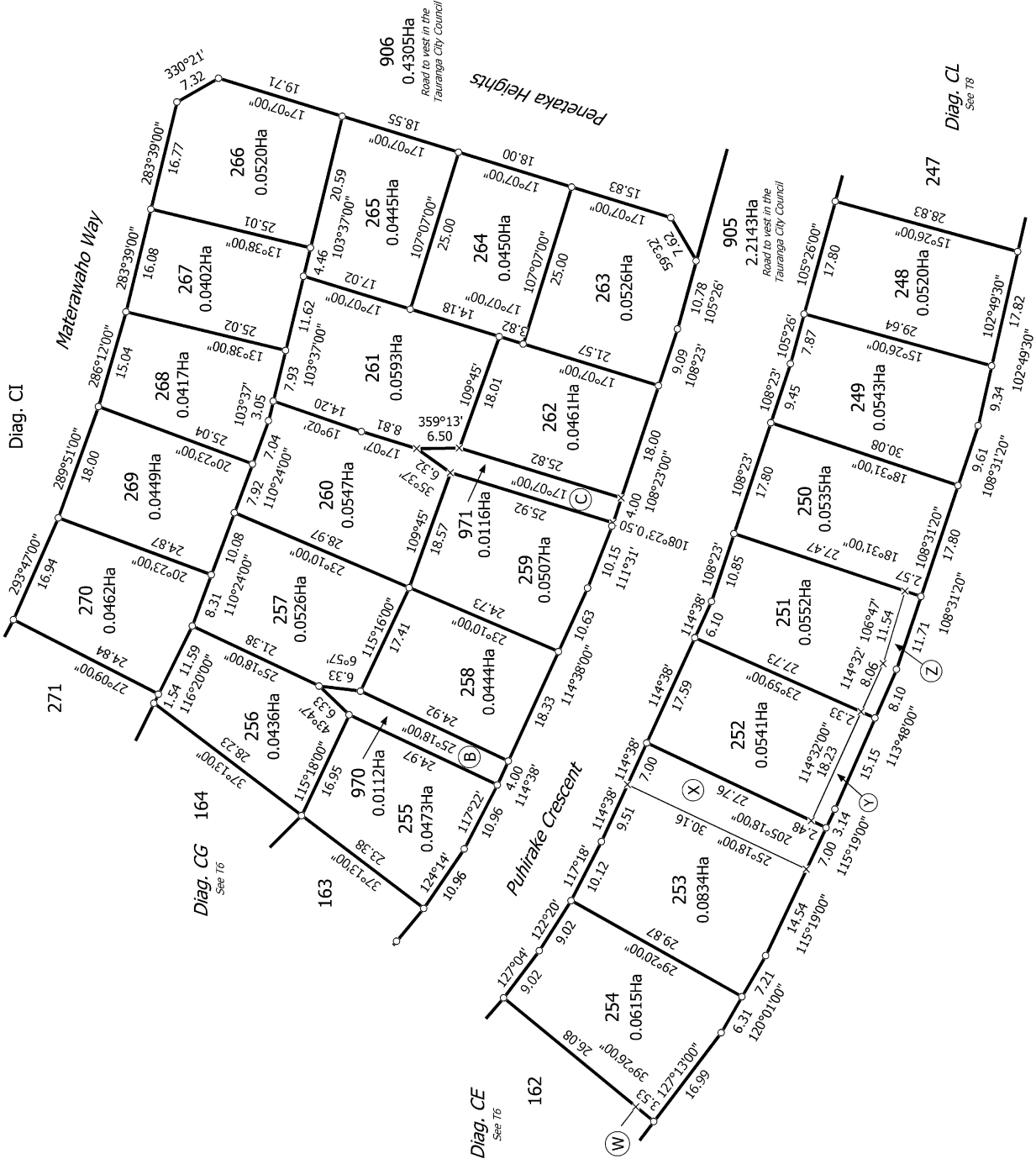


T 5/18



T 6/18

<p>Land District: South Auckland</p> <p><b>Digitally Generated Plan</b></p> <p>Generated on: 22/07/2016 11:16pm Page 19 of 31</p>	<p>Lots 104-106, 148-235, 240-351, 905-908, 937-938, 940, 947-948, 969-972, 974 &amp; 1002-1003 being a subdivision of Lot 1001 DP 486181, Lot 6 DP 348694 and Pt 1 of s. 9 &amp; 10 DP 364444</p>	<p>Surveyor: Michael Peter Dewhirst</p> <p>Firm: Harrison Grierson Consultants Ltd</p>	<p>Title Plan</p> <p>DP 494113</p> <p>Deposited on: 5/07/2016</p>
---	--	--	---

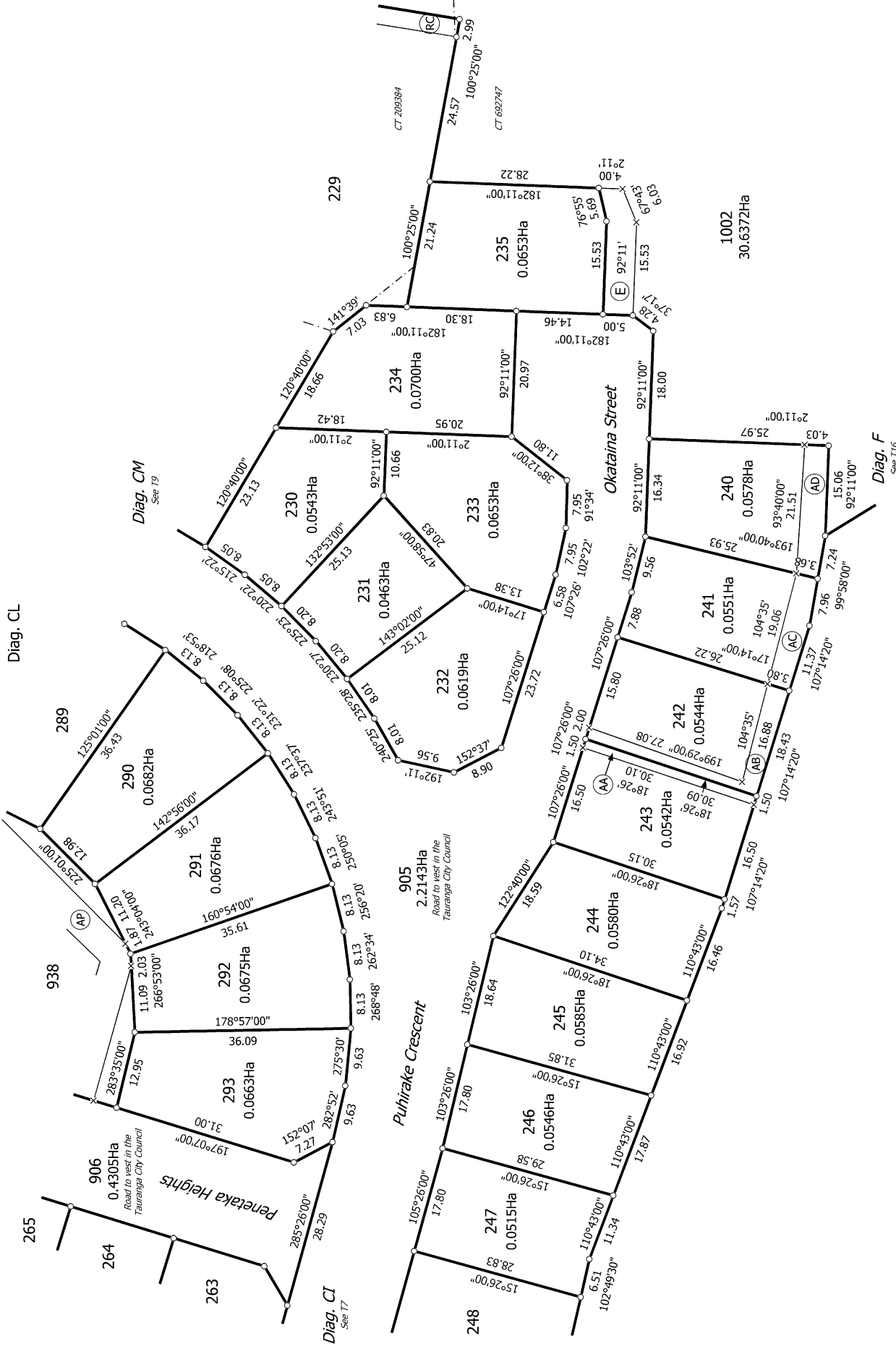


T 7/18

Lots 104-106, 148-235, 240-351, 905-908, 937-938, 940, 947-948, 969-972, 974  
 & 1002-1003 being a subdivision of Lot 1001 DP 486181, Lot 6 DP 348694 and  
 Pt 1 of 9 & 10 DP 364444

Surveyor: Michael Peter Dewhurst  
 Firm: Harrison Grierson Consultants Ltd

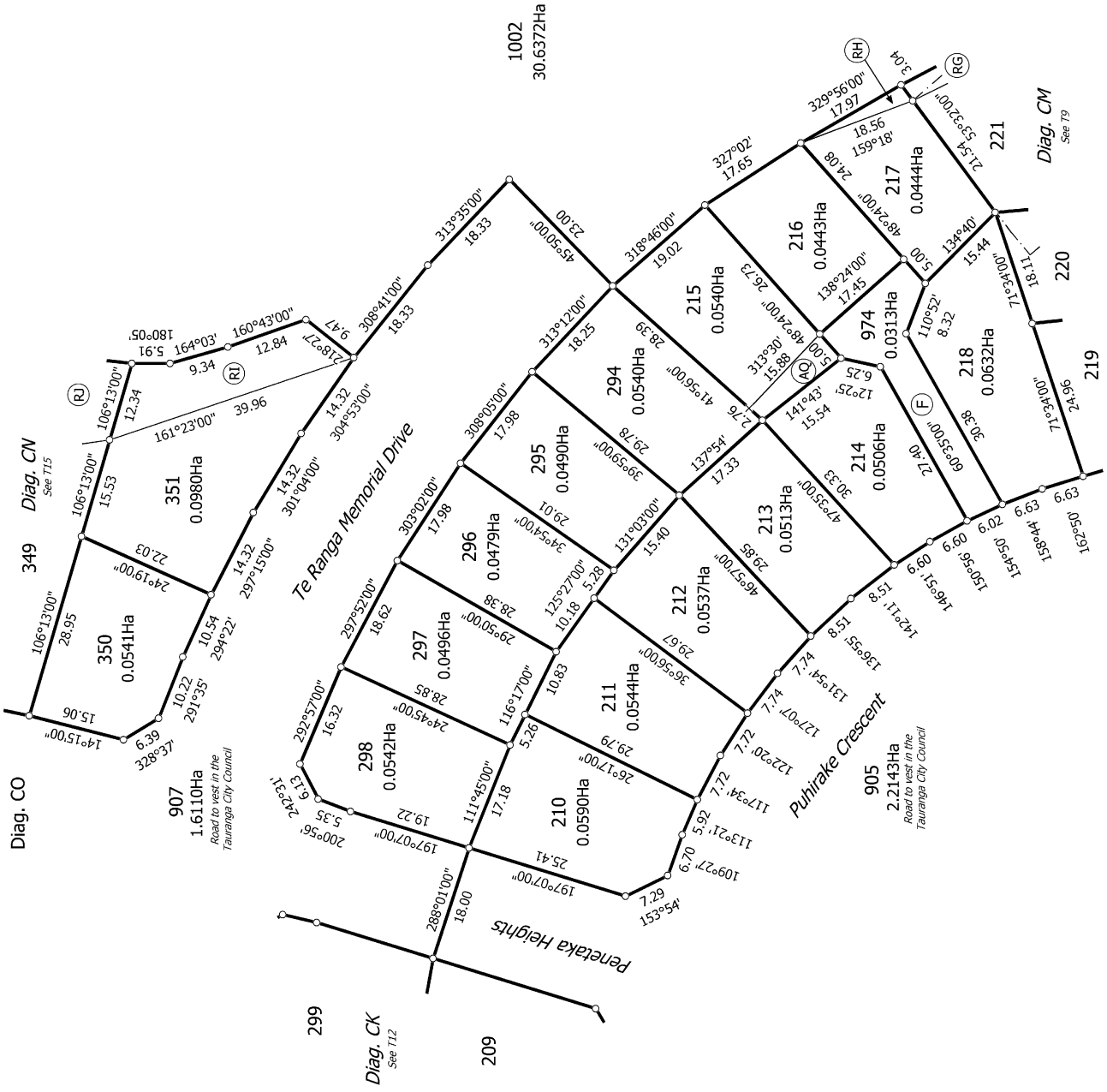
Title Plan  
 DP 494113  
 Deposited on: 5/07/2016



T 8/18

Land District: South Auckland	Surveyor: Michael Peter Dewhirst Firm: Harrison Grierson Consultants Ltd	Title Plan DP 494113 Deposited on: 5/07/2016
Lots 104-106, 148-235, 240-351, 905-908, 937-938, 940, 947-948, 969-972, 974 & 1002-1003 being a subdivision of Lot 1001 DP 486181, Lot 6 DP 348694 and Pt 1 cts. 9 & 10 DP 364444		Digitally Generated Plan Generated on: 22/07/2016 11:16pm Page 21 of 31





T 10/18

Land District: South Auckland

Digitally Generated Plan

Generated on: 22/07/2016 11:16pm Page 23 of 31

Lots 104-106, 148-235, 240-351, 905-908, 937-938, 940, 947-948, 969-972, 974

& 1002-1003 being a subdivision of Lot 1001 DP 486181, Lot 6 DP 348694 and

Pt 1 of 9 & 10 DP 364444

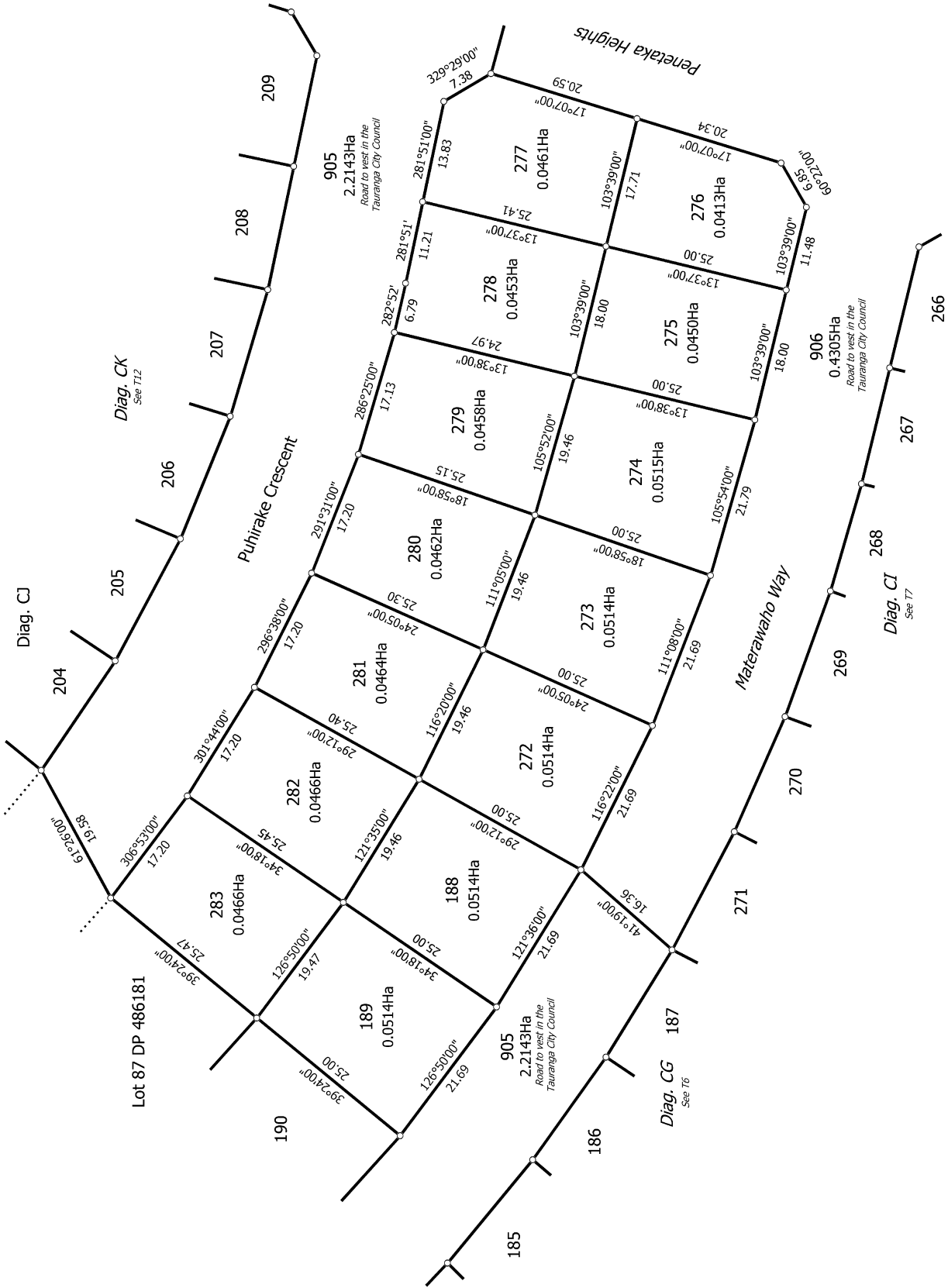
Surveyor: Michael Peter Dewhurst

Firm: Harrison Grierson Consultants Ltd

Title Plan

DP 494113

Deposited on: 5/07/2016



T 11/18

Land District: South Auckland  
**Digitally Generated Plan**  
 Generated on: 22/07/2016 11:16pm Page 24 of 31

Lots 104-106, 148-235, 240-351, 905-908, 937-938, 940, 947-948, 969-972, 974  
 & 1002-1003 being a subdivision of Lot 1001 DP 486181, Lot 6 DP 348694 and  
 Pt 1 of 9 & 10 DP 364444

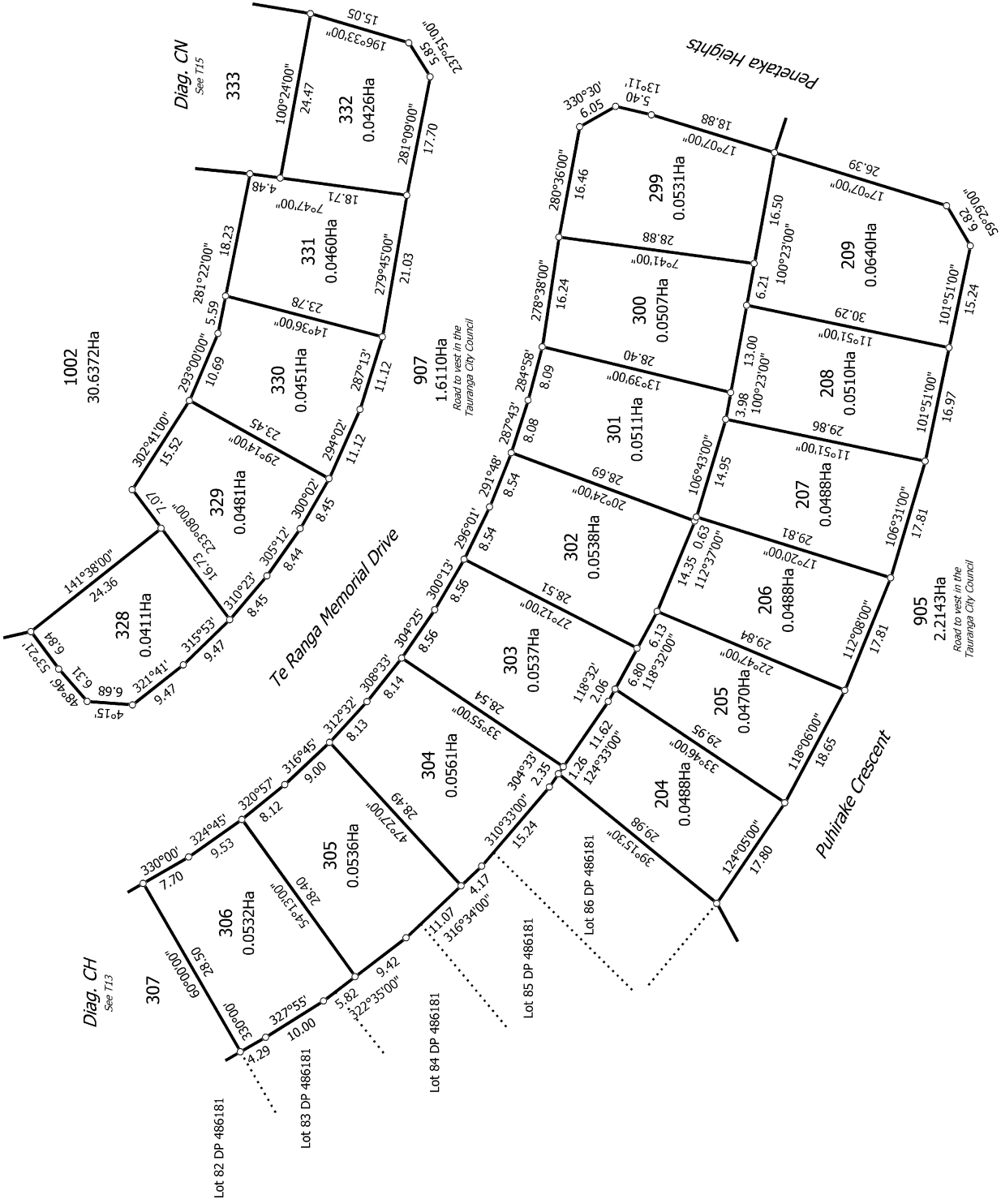
Surveyor: Michael Peter Dewhurst  
 Firm: Harrison Grierson Consultants Ltd

Title Plan  
 DP 494113  
 Deposited on: 5/07/2016





Diag. CK



T 12/18

Land District: South Auckland

Digitally Generated Plan

Generated on: 22/07/2016 11:16pm Page 25 of 31

Lots 104-106, 148-235, 240-351, 905-908, 937-938, 940, 947-948, 969-972, 974

& 1002-1003 being a subdivision of Lot 1001 DP 486181, Lot 6 DP 348694 and

Pt 1 of 9 & 10 DP 364444

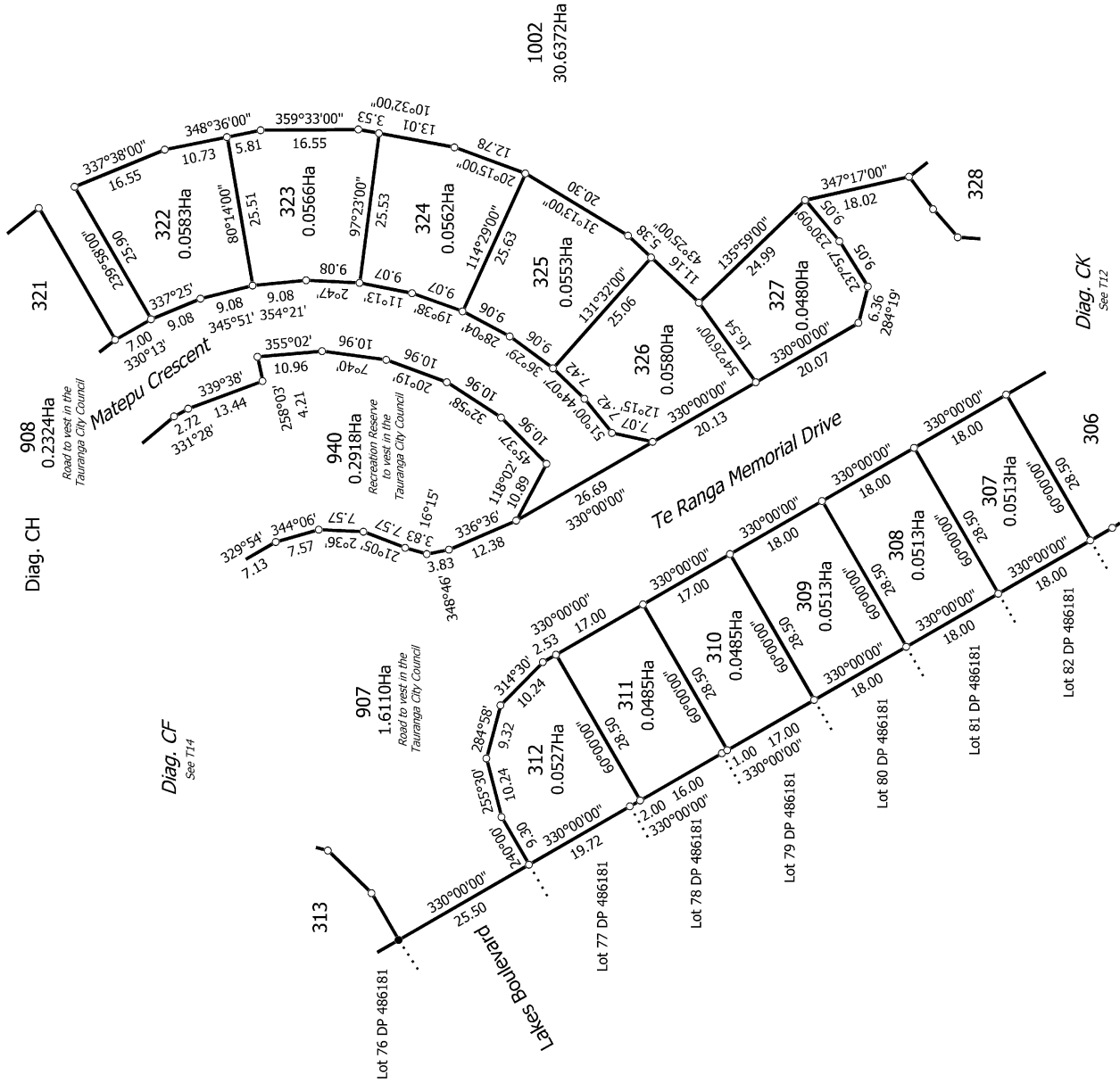
Surveyor: Michael Peter Dewhurst

Firm: Harrison Grierson Consultants Ltd

Title Plan

DP 494113

Deposited on: 5/07/2016



T 13/18

Land District: South Auckland

Digitally Generated Plan  
Generated on: 22/07/2016 11:16pm Page 26 of 31

Lots 104-106, 148-235, 240-351, 905-908, 937-938, 940, 947-948, 969-972, 974  
& 1002-1003 being a subdivision of Lot 1001 DP 486181, Lot 6 DP 348694 and  
Pt 1 of 9 & 10 DP 364444

Surveyor: Michael Peter Dewhurst  
Firm: Harrison Grierson Consultants Ltd

Title Plan  
DP 494113  
Deposited on: 5/07/2016

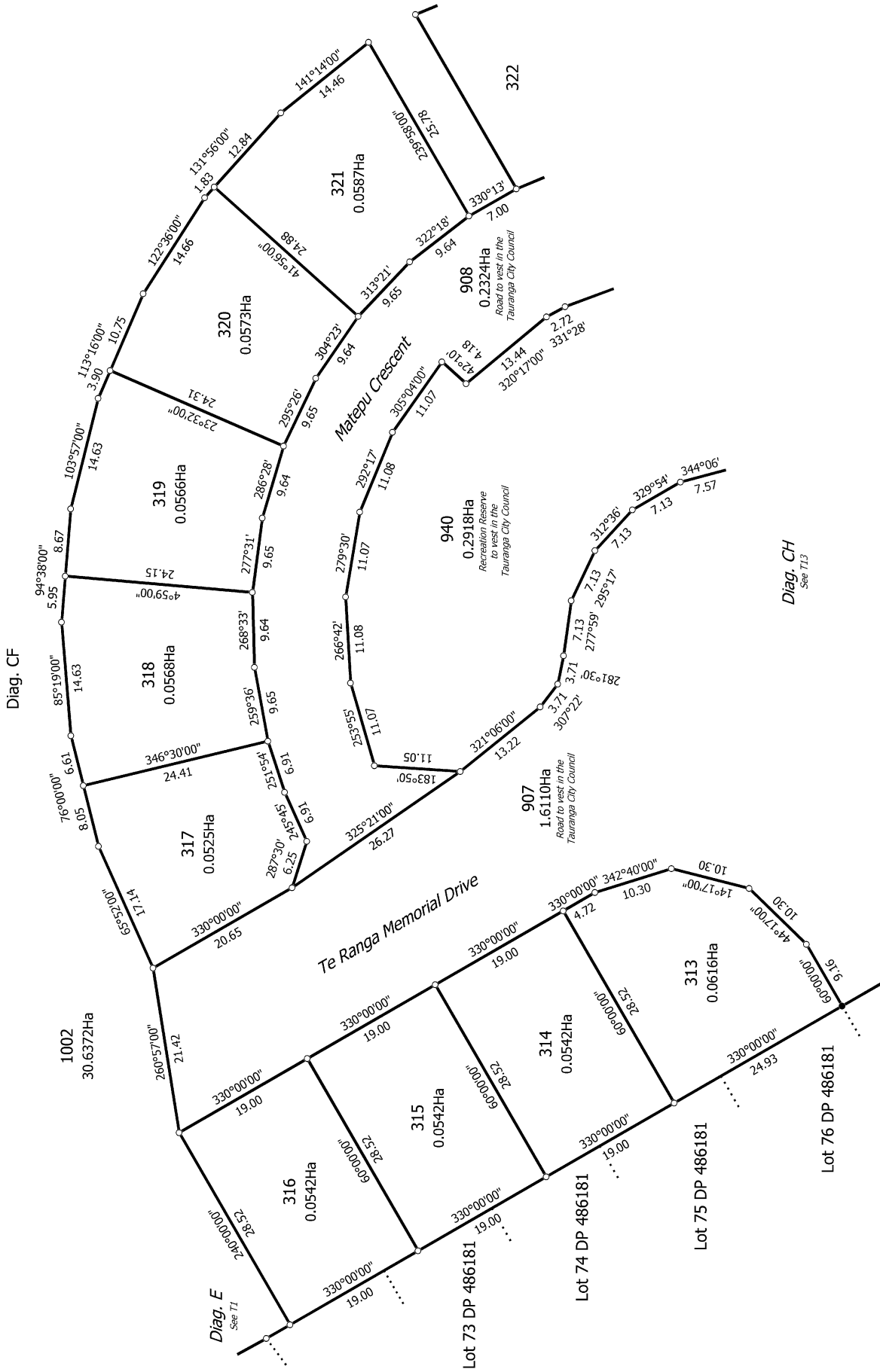
Diag. CK  
See T12

Diag. CF  
See T14

Diag. CH



Diag. CF



T 14/18

Land District: South Auckland

Digitally Generated Plan

Generated on: 22/07/2016 11:16pm Page 27 of 31

Lots 104-106, 148-235, 240-351, 905-908, 937-938, 940, 947-948, 969-972, 974

& 1002-1003 being a subdivision of Lot 1001 DP 486181, Lot 6 DP 348694 and

Pt 1 of 9 & 10 DP 364444

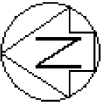
Surveyor: Michael Peter Dewhurst

Firm: Harrison Grierson Consultants Ltd

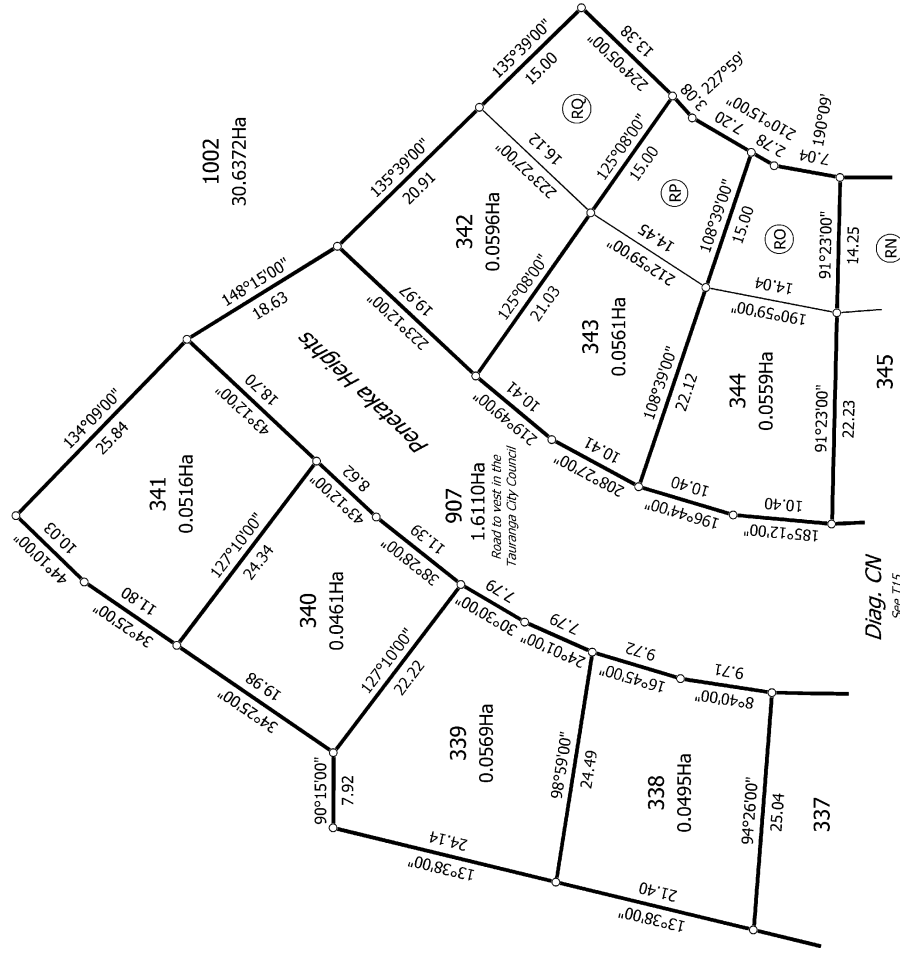
Title Plan

DP 494113

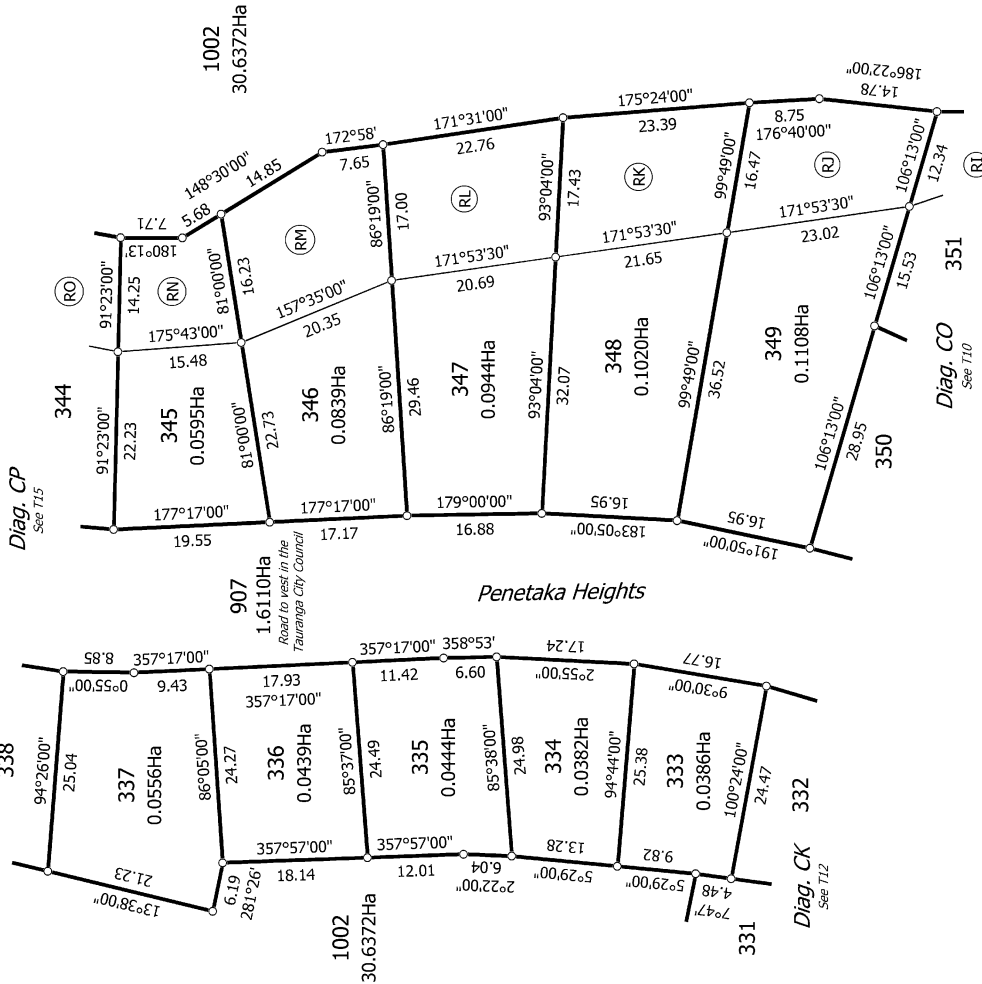
Deposited on: 5/07/2016



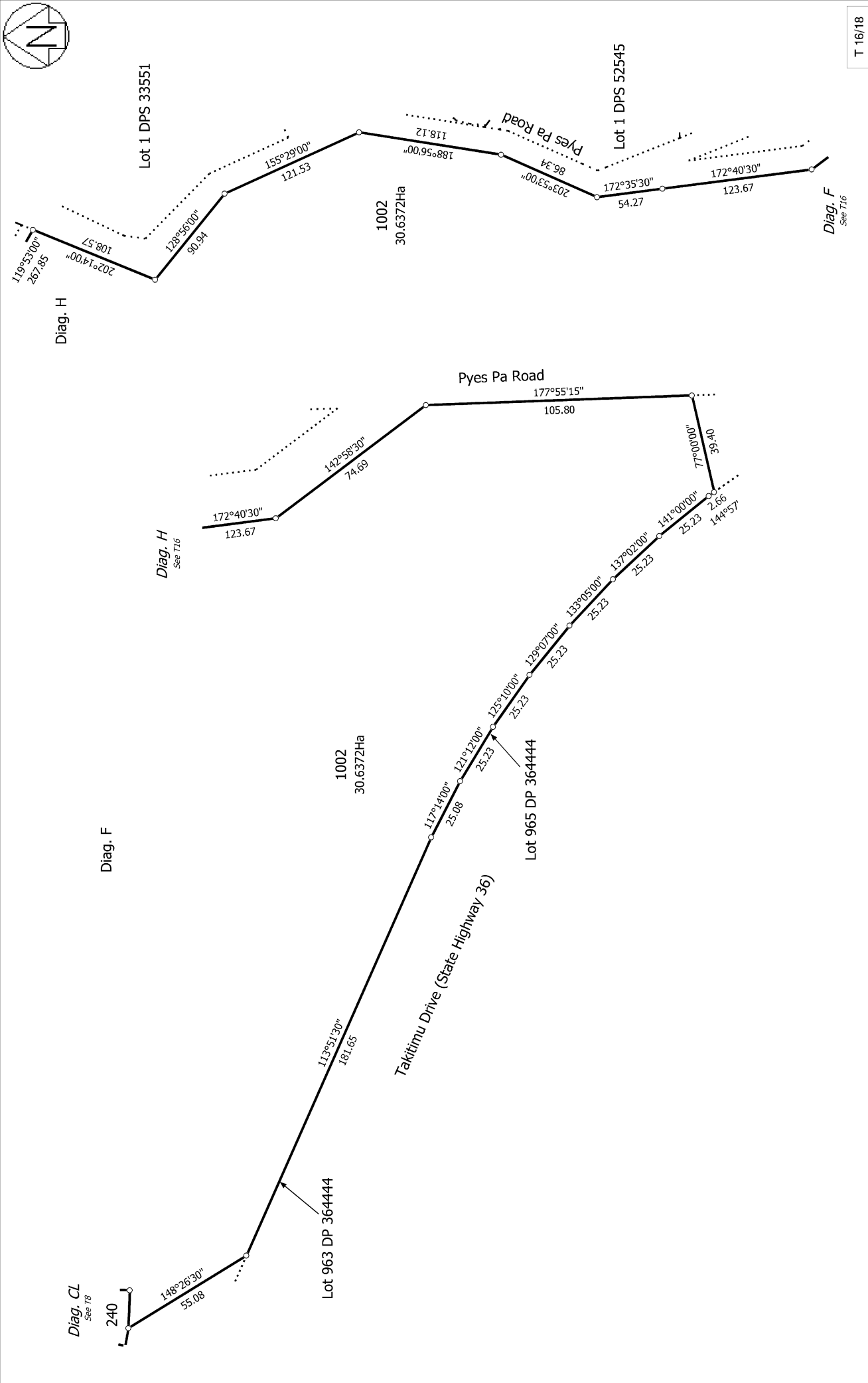
Diag. CP



Diag. CN



Penetaka Heights



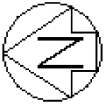
T 16/18

Land District: South Auckland  
 Digitally Generated Plan  
 Generated on: 22/07/2016 11:16pm Page 29 of 31

Surveyor: Michael Peter Dewhirst  
 Firm: Harrison Grierson Consultants Ltd

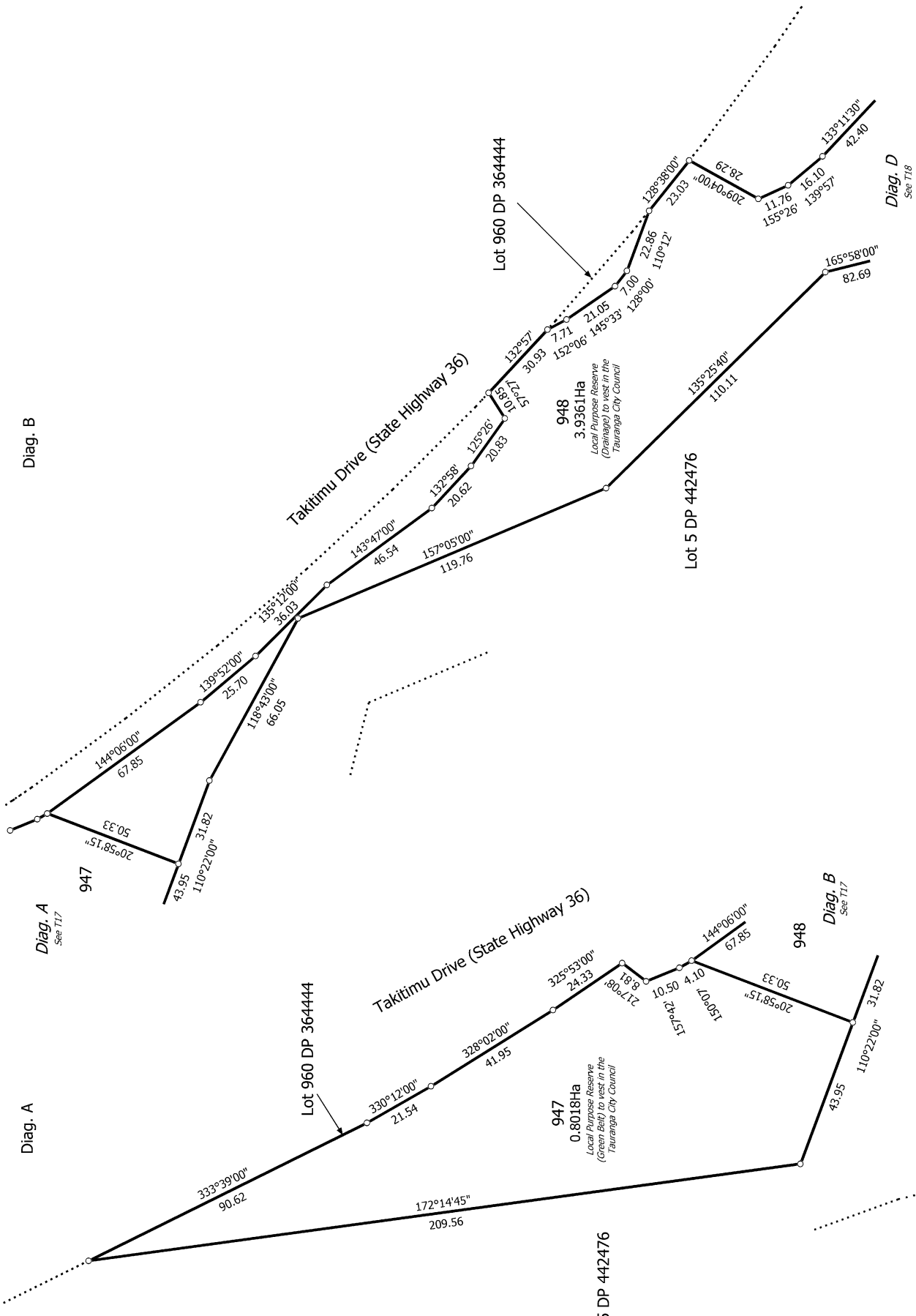
Lots 104-106, 148-235, 240-351, 905-908, 937-938, 940, 947-948, 969-972, 974  
 & 1002-1003 being a subdivision of Lot 1001 DP 486181, Lot 6 DP 348694 and  
 Pt 1 of s. 9 & 10 DP 364444

Title Plan  
 DP 494113  
 Deposited on: 5/07/2016



Diag. B

Diag. A



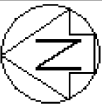
T 17/18

Land District: South Auckland  
**Digitally Generated Plan**  
 Generated on: 22/07/2016 11:16pm Page 30 of 31

Lots 104-106, 148-235, 240-351, 905-908, 937-938, 940, 947-948, 969-972, 974  
 & 1002-1003 being a subdivision of Lot 1001 DP 486181, Lot 6 DP 348694 and  
 Pt 1 of 9 & 10 DP 364444

Surveyor: Michael Peter Dewhurst  
 Firm: Harrison Grierson Consultants Ltd

Title Plan  
 DP 494113  
 Deposited on: 5/07/2016



Diag. B  
See T17

Lot 5 DP 442476

Diag. D

Lot 960 DP 364444

Takitimu Drive (State Highway 36)

Lot 962 DP 364444

Lot 964 DP 364444

948  
3.9361Ha  
Local Purpose Reserve  
(Managed by West of the  
Tauranga City Council)

Lot 1 DPS 33341

Lot 2 DPS 69452

1003  
21.7494Ha

Diag. DA  
See T18

1003  
21.7494Ha

Lot 2 DPS 84552

Lot 1 DPS 4351

Lot 1 DPS 4351

Lot 1 DP 370187

T 18/18

Pyes Pa Road (State Highway 36)

Land District: South Auckland

Digitally Generated Plan

Generated on: 22/07/2016 11:16pm Page 31 of 31

Lots 104-106, 148-235, 240-351, 905-908, 937-938, 940, 947-948, 969-972, 974  
& 1002-1003 being a subdivision of Lot 1001 DP 486181, Lot 6 DP 348694 and  
Pt 1 of 9 & 10 DP 364444

Surveyor: Michael Peter Dewhurst  
Firm: Harrison Grierson Consultants Ltd

Title Plan  
DP 494113

Deposited on: 5/07/2016